

WATER TANK INSPECTION REPORT

Town, City, Agency: Snake River Water District Date: 10/23/2020

Tank#: _____ Tank Capacity: 750K Dia.: 50 High: 32

Current Water Level: 28 Tank Location: Pilot Load

Elevated Tank : Ground Level Tank : Under ground Concrete Tank :

Bolted Welded : Riveted : Concrete :

Type of service to be performed:

Video Inspection Only

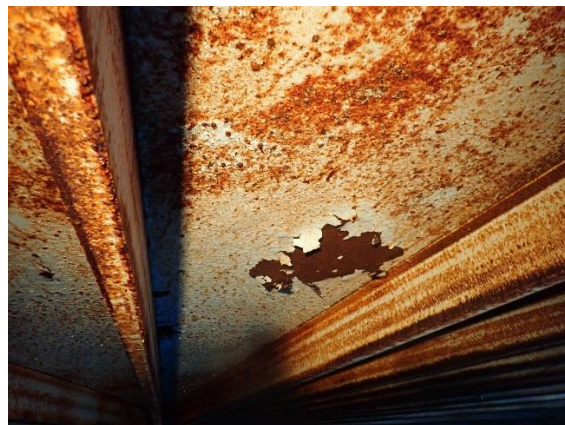
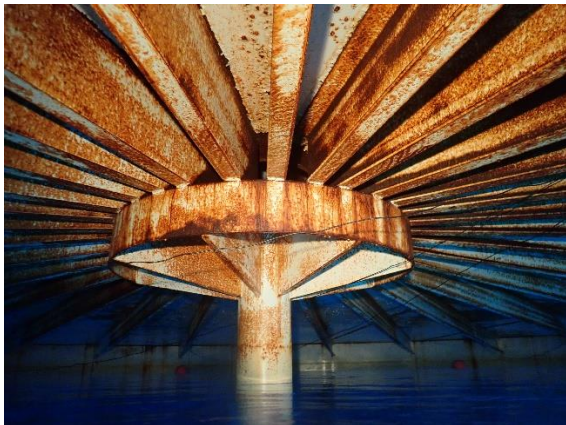
Still Photography Only

Complete inspection with vacuum cleaning

Depth of sediment, over 2" _____

Additional cost to remove sediment _____

Additional cost for coating repairs _____



Counted thirty, 12" rafters, no replacement is necessary



C W Divers

Exterior Tank Inspection

Tank Foundation: (concrete retainer ring, pad, soil erosion)

4 3 2 1

No soil erosion

No cracking or spalling of concrete

Observed no settling of floor.

External Ladder Condition: (bolts, rungs, welds, security, fall protection)

4 3 2 1

Ladder welded to shell

Has security door in place

Ladder has full fall protection cage.

External Tank Roof Condition: (hatch, open areas)

4 3 2 1

Tank roof covered with rubber cap, in good condition.

Roof Vent: (screen condition, adequate vent)

4 3 2 1

Roof venting is adequate

Roof vent screen in place

Vent has been raised, and replaced at some time.

Exterior Paint System: (cracking, peeling, chalking, rock damage or graffiti)

4 3 2 1

Exterior paint system in good condition

Tank exterior has insulation blanket, in good condition.

Water Tank Inspection Report
Internal Inspection

Depth of Sediment, Color, Sand or Silt:

Depth of Sediment is: <1/8" Light Silt Average Sediment is: 1/8"

Steel Structures Painting Council SSPC-VIS 2
Standard Method of Evaluating Degree of Rusting on Painted Surfaces

Table with 4 columns: Rust Grade, Description, Rust Grade, Description. Rows include grades 10, 9 to 7, 6 to 5, 4 and 3, 2, 1, 0 with corresponding rust percentages.

Interior Ceiling Panels: Rust Grade 0 Spot [] General [x] Pinpoint []

Coating Condition:

4 [] 3 [] 2 [] 1 [x]

Coating cracking

Coating peeling

Coating on ceiling panels is unsatisfactory

Observed aggressive surface rust. Recommend caulking between the ceiling and rafters and ceiling seams at recondition time. Spots of heavy layer corrosion visible on the ceiling.

Interior Ceiling Rafters: Rust Grade 0 Spot [] General [x] Pinpoint []

Coating Condition:

4 [] 3 [] 2 [] 1 [x]

Coating on rafters unsatisfactory

12" rafters. Light surface rust covers 80% of surface. Estimate 5' between rafters on the rafter end. Rafters are welded to the center circumference ring. 4" space between center rafters at dollar plate. Counted 30 rafters, no replacement necessary. Inside, lower edge of rafter has severe corrosion.

Ceiling Rafter Clips: Rust Grade _____ Spot [] General [] Pinpoint []

Coating Condition:

4 [] 3 [] 2 [] 1 []

N/A

C W Divers

Steel Structures Painting Council
Standard Method of Evaluating Degree of Rusting on Painted Surfaces

SSPC-VIS 2

Rust Grade	Description	Rust Grade	Description
10	No Rusting	3	10% to 16%
9 to 7	.3% to 1%	2	16% to 33%
6 to 5	1% to 3%	1	33% to 50%
4	3% to 10%	0	Greater than 50%

Ceiling Rafter Bolts: Rust Grade ____ Spot General Pinpoint

Coating Condition:

4 3 2 1

N/A

Overflow: Rust Grade 8 Spot General Pinpoint

Coating Condition:

4 3 2 1

External Over-Flow Piping

Over-Flow Supports In Fair Condition

Light surface rust. Weld seam is good. Observed a crack in the coating on weld penetrating the shell. Should be further investigated at re-condition time.

Ring Wall #4: Rust Grade 0 Spot General Pinpoint

Coating Condition:

4 3 2 1

Coating peeling and cracking

Shotgun, pinpoint rusting

Coating failing at weld seams

Above the water line has delaminated coating and severe general corrosion.

C W Divers

Steel Structures Painting Council

SSPC-VIS 2

Standard Method of Evaluating Degree of Rusting on Painted Surfaces

Rust Grade	Description	Rust Grade	Description
10	No Rusting	3	10% to 16%
9 to 7	.3% to 1%	2	16% to 33%
6 to 5	1% to 3%	1	33% to 50%
4	3% to 10%	0	Greater than 50%

Ring Wall #3: Rust Grade 2 Spot General Pinpoint

Coating Condition:

4 3 2 1

Shotgun, pinpoint rusting

Coating failing at weld seams

Weld seams have corrosion. Observed blisters.

Ring Wall #2: Rust Grade 2 Spot General Pinpoint

Coating Condition:

4 3 2 1

Shotgun, pinpoint rusting

Light blisters in coating

Coating failing at weld seams

Weld seams have corrosion. Spots of delaminated coating.

Ring Wall #1 (Bottom): Rust Grade 2 Spot General Pinpoint

Coating Condition:

4 3 2 1

Light blisters in coating

Coating failing at weld seams

Coating in unsatisfactory condition

No deep measurable corrosion.

C W Divers

Steel Structures Painting Council
Standard Method of Evaluating Degree of Rusting on Painted Surfaces

SSPC-VIS 2

Rust Grade	Description	Rust Grade	Description
10	No Rusting	3	10% to 16%
9 to 7	.3% to 1%	2	16% to 33%
6 to 5	1% to 3%	1	33% to 50%
4	3% to 10%	0	Greater than 50%

Corner Weld: Rust Grade 9 Spot General Pinpoint

Coating Condition:

4 3 2 1

Corner Weld Coating In Good Condition

Minor spots of corrosion.

Floor: Rust Grade 4 Spot General Pinpoint

Coating Condition:

4 3 2 1

Coating on floor in fair condition

Observed Blistering on Floor

No deep measurable corrosion. Weld seams are good. Only spot areas of pitting corrosion.

Inlet/Outlet Piping: Rust Grade 9 Spot General Pinpoint

Coating Condition:

4 3 2 1

Common

Has No Silt Dam

12" pipe. Support is in good condition. Pipe is flush with floor.

C W Divers

Steel Structures Painting Council
Standard Method of Evaluating Degree of Rusting on Painted Surfaces

SSPC-VIS 2

Rust Grade	Description	Rust Grade	Description
10	No Rusting	3	10% to 16%
9 to 7	.3% to 1%	2	16% to 33%
6 to 5	1% to 3%	1	33% to 50%
4	3% to 10%	0	Greater than 50%

Roof Support Pads: Rust Grade 9 Spot General Pinpoint

Coating Condition:

4 3 2 1

Roof support pad in good condition

Welded to the floor. No blistering.

Vertical Roof Support: Rust Grade 2 Spot General Pinpoint

Coating Condition:

4 3 2 1

Coating blistering on support

Vertical roof support unsatisfactory condition

1" thick gussets on dollar plate. No measurable corrosion on the 6 gussets on the bottom.
General corrosion on lifting eyes.

Tank Interior Ladder: Rust Grade 2 Spot General Pinpoint

Coating Condition:

4 3 2 1

Ladder unsatisfactory

Upper two rungs have corrosion. Structure is good, replacement not necessary.

Cathodic Protection: Impressed System Passive System

Date installed - _____ Native State - _____ V Current - _____ mA On Potential - _____ V

Condition of Anodes - CP system working, anodes 60% consumed.

C W Divers

Weld Seam Inspection

A-Satisfactory B-Splatter C-Porosity D-Convexity/Concavity E-Cracks
G-Incomplete Fusion H-Incomplete Penetration I-Undercut J-Under Fill K-Over lap
Z-Unable to evaluate; welds masked by coating

Floor Weld Seams A Shell Weld Seams Ring #1 A Ring #2 A
Ring #3 A Ring #4 A
Ring #5 Ring #6

Structural Condition: (bolts, rivets welds man way fasteners, nozzles, gaskets, general corrosion)

4 3 2 1

Structural condition good, minor corrosion

Majority of corrosion on ceiling, rafters and weld seams.

Recommendations:

If the tank is recoated soon, there should not be any welding repairs. The anodes are 60% expired. If recondition is delayed welding repairs will be needed to ceiling and possibly upper shell.

Recommend recoating entire interior tank. Recommend caulking on the ceiling plates and ceiling plate to rafter sections.

Consider removing some of the tall trees on the side of the hill so they don't fall on top of the tank.

Consider a heavy mil urathane coating to prevent ice damage.

NACE Level III Coatings Inspector #763



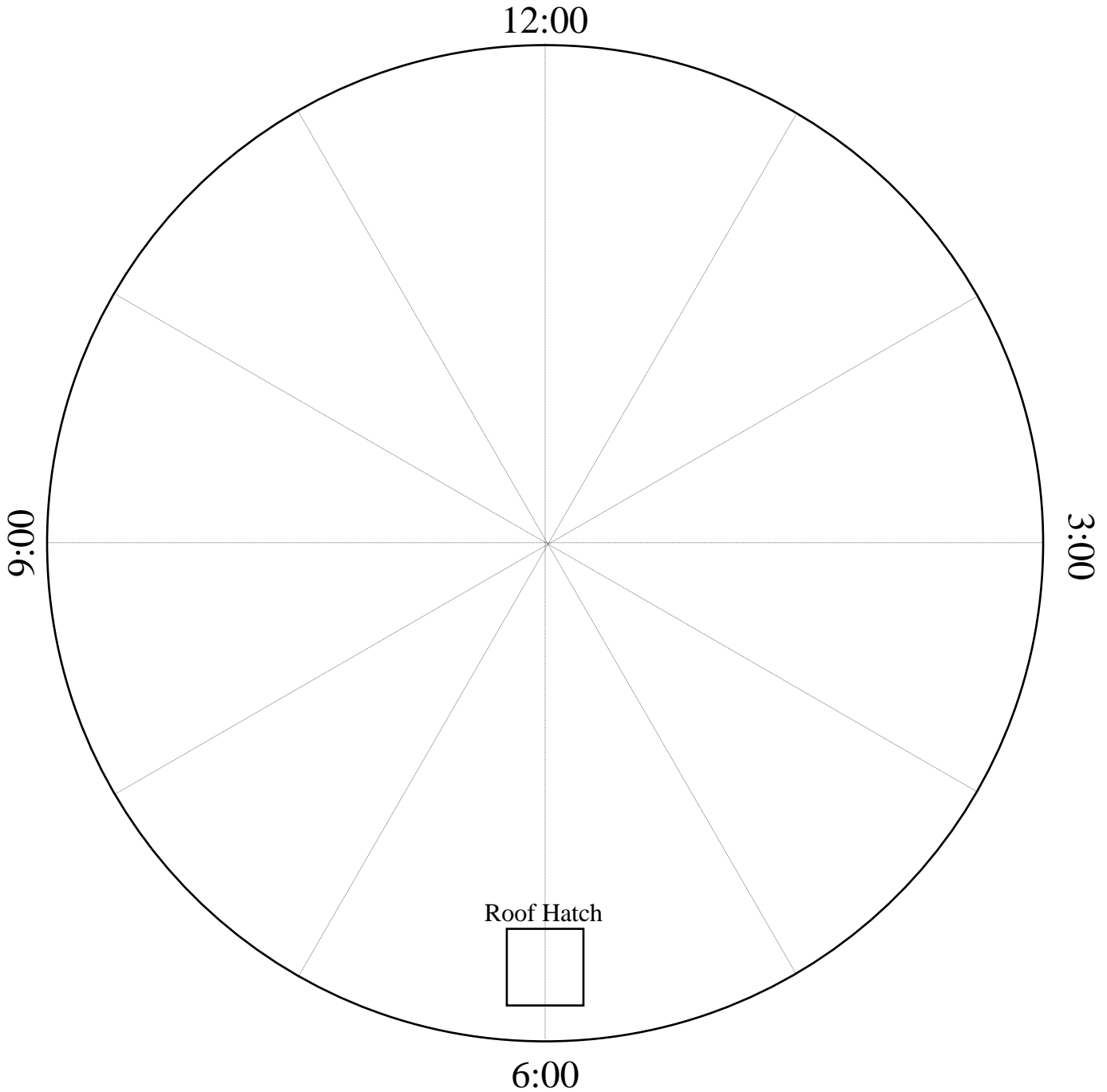
Date 10/23/20

Storage Tank Internal Penetration Layout

Inlet Position: 10:00 Outlet Position: 10:00 Drain Position: :

Over Flow Position: : Shell Manways: 6:30 / 12:30

Other Penetrations:



● = Shell Penetration

● = Floor Penetration

ALL LOCATIONS ARE APPROXIMATIONS ONLY AND NOT TO SCALE